

## **Q&A**

### **1. How to install the LABTOOL-T400 software?**

**Sol:**

**Step1. Install the LABTOOL-T400 software. If you do not have the software, and you can download it from our website([www.aec.com.tw](http://www.aec.com.tw)). If you have installed the software, skip this step.**

**Step2. Turn the LABTOOL-T400 power on.**

**Step3. Select “Start → Control Console → System → Hardware → Device Manager” and you will see the “AEC LabTool-T400 Turbo Flash Gang Programmer”.**

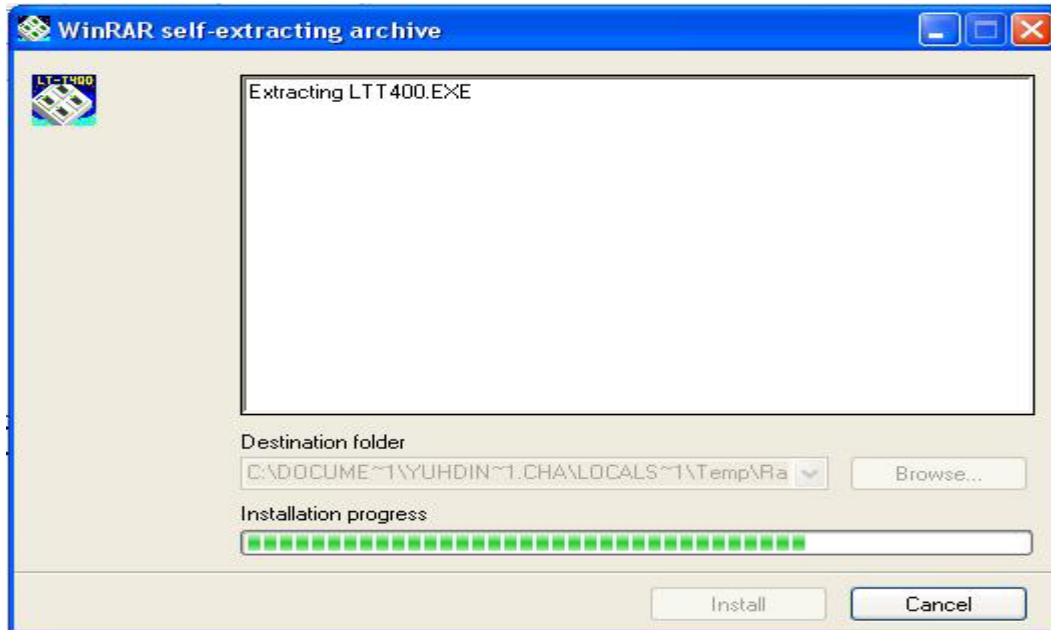
**Step4. Run the LABTOOL-T400 software.**

**Note : Recommended O.S. in your PC**

- (1) Windows XP + SP1**
- (2) Windows XP + SP2**
- (3) Windows 2000 + SP4**

**Step1. Install the LABTOOL-T400 software. If you do not have the software, and you can download it from our website([www.aec.com.tw](http://www.aec.com.tw)). If you have installed the software, skip this step.**

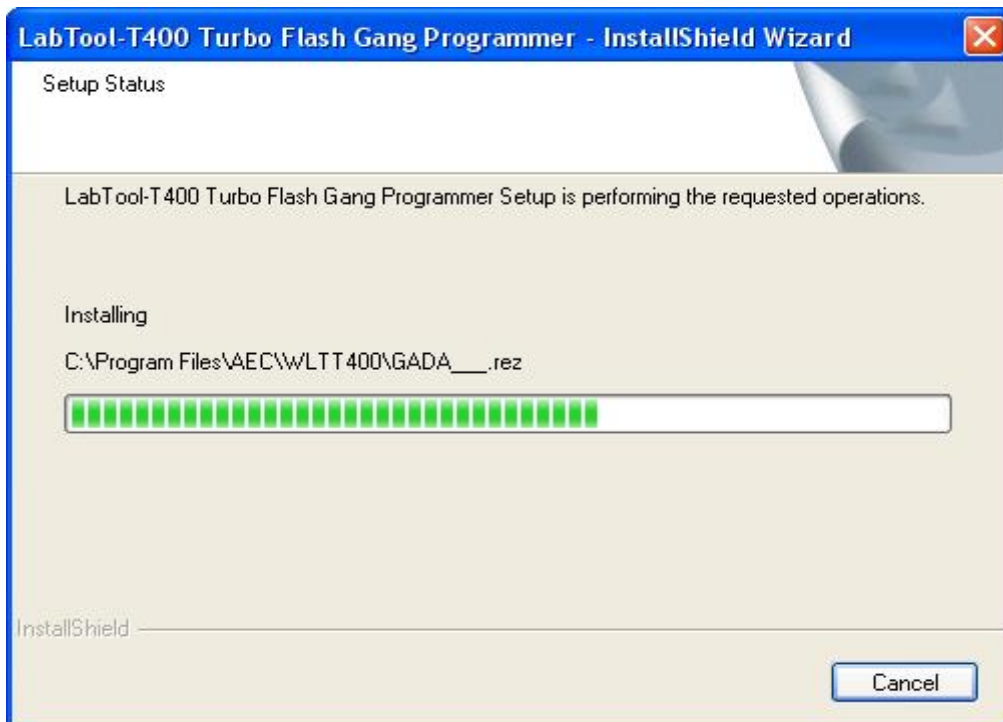
**Fig1-1 : Extracting**



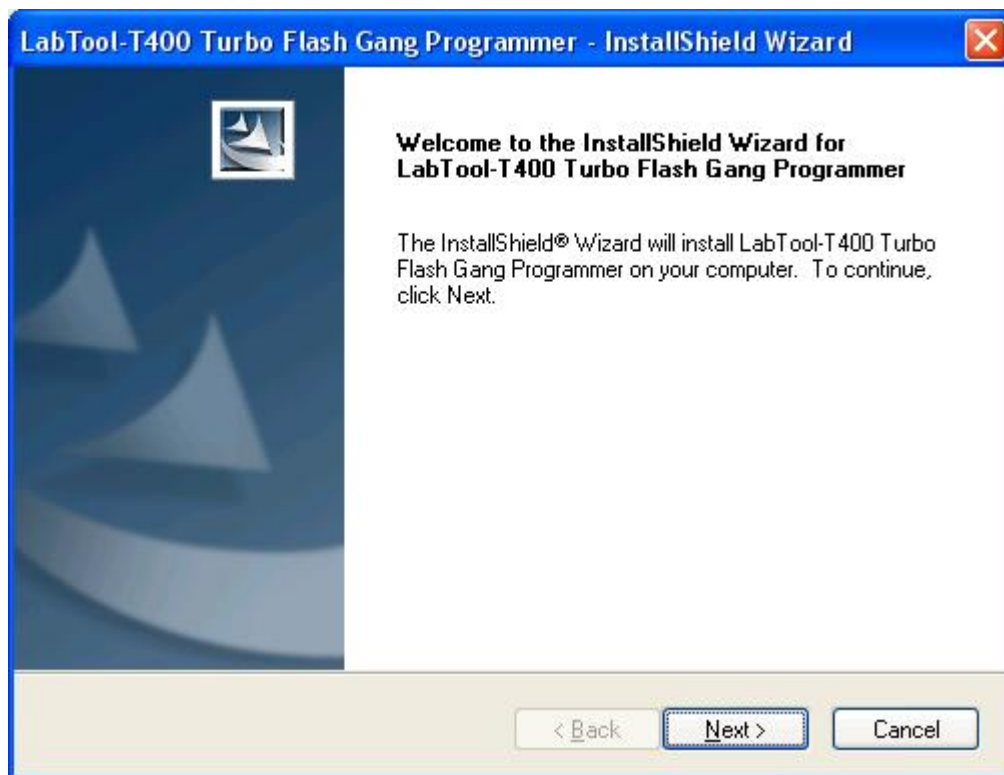
**Fig1-2 : Starting InstallShield Wizard**



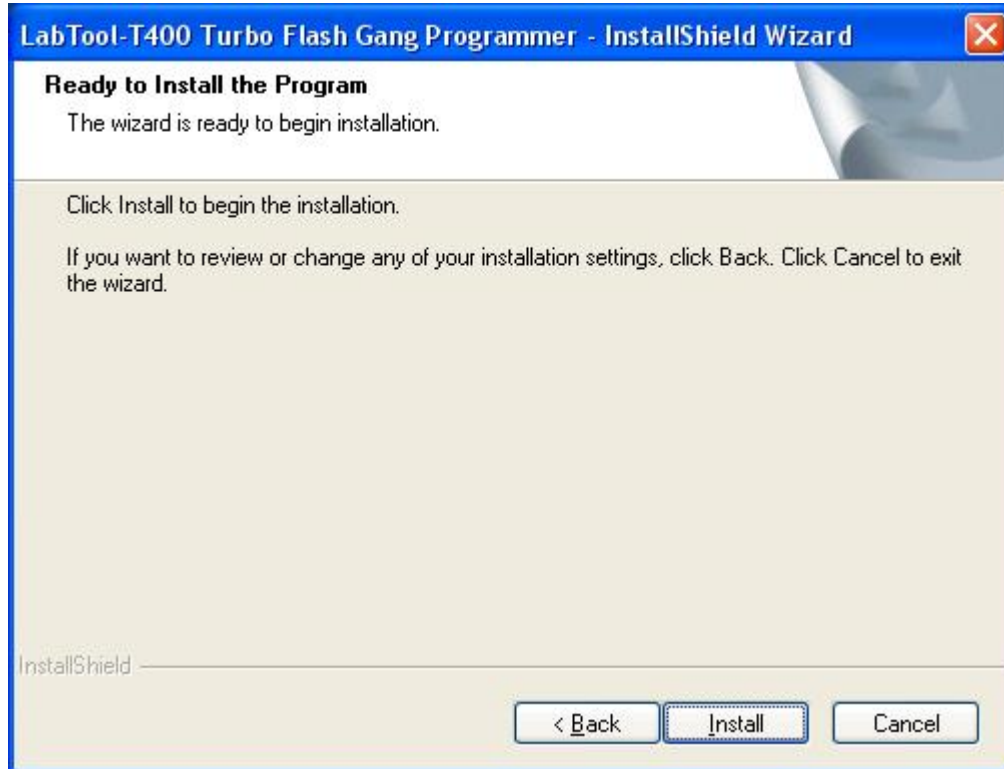
**Fig1-3 : Installing**



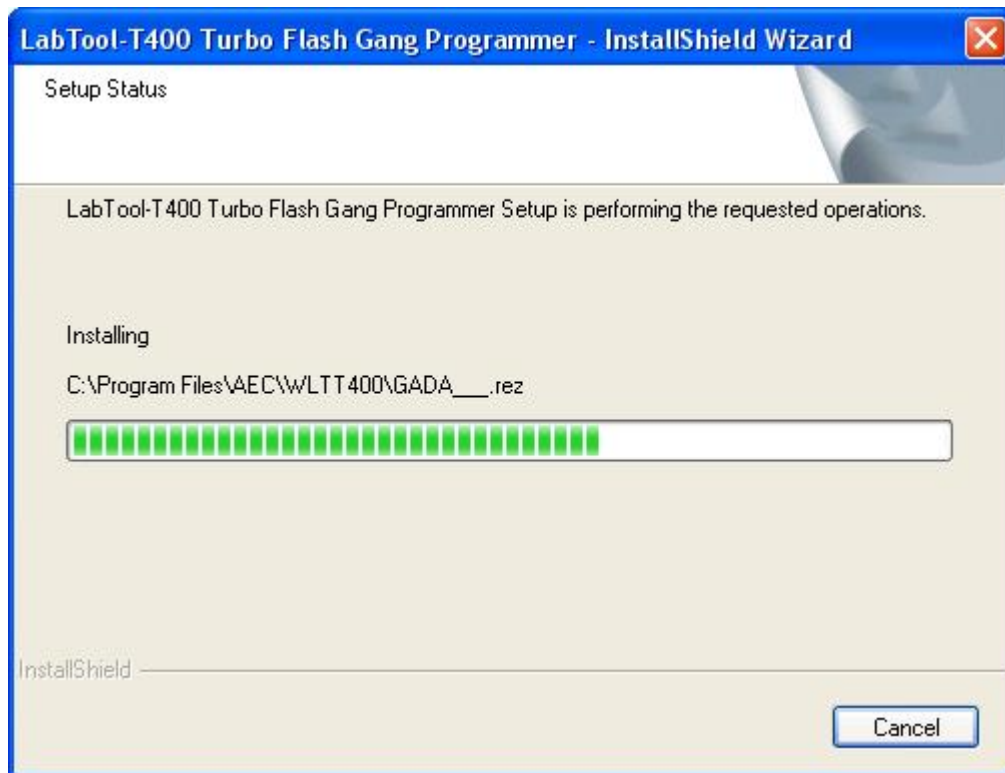
**Fig1-4 : Press “ Next”**



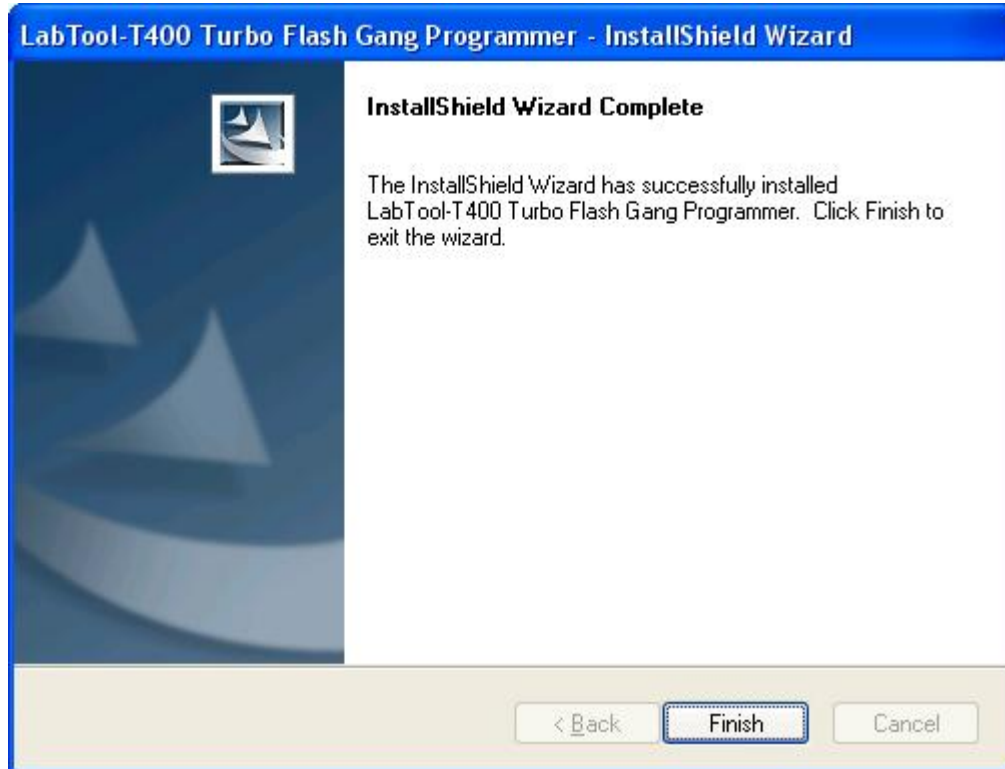
**Fig1-5 : Press “Install”**



**Fig1-6 : Installing**



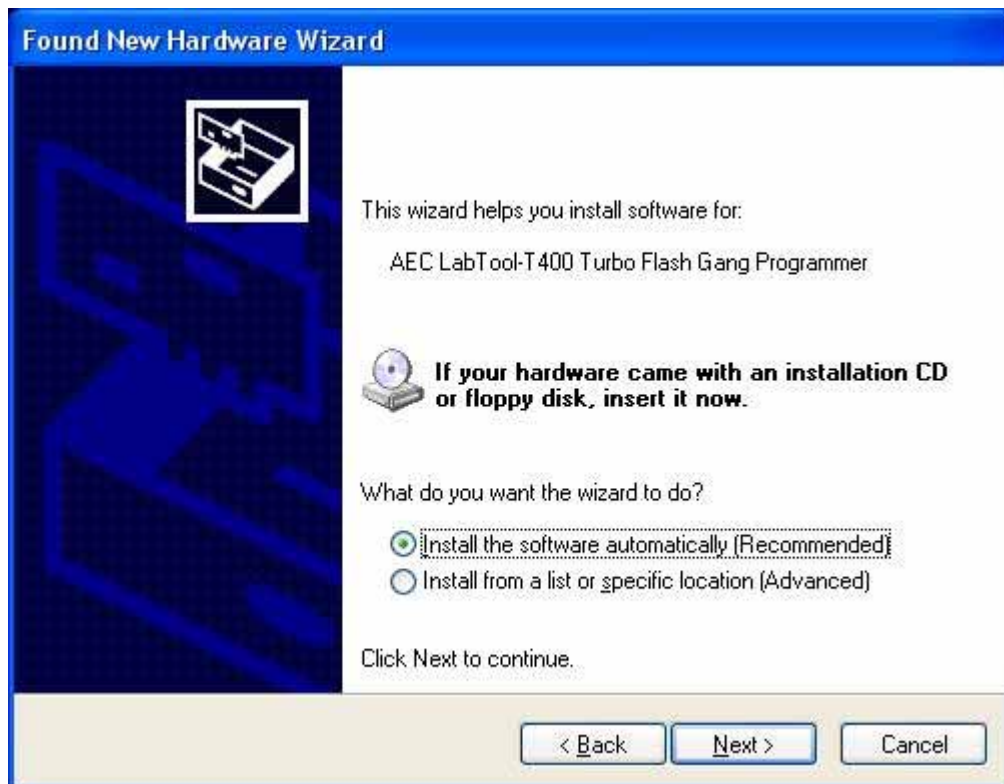
**Fig1-7 : Press “ Finish”**



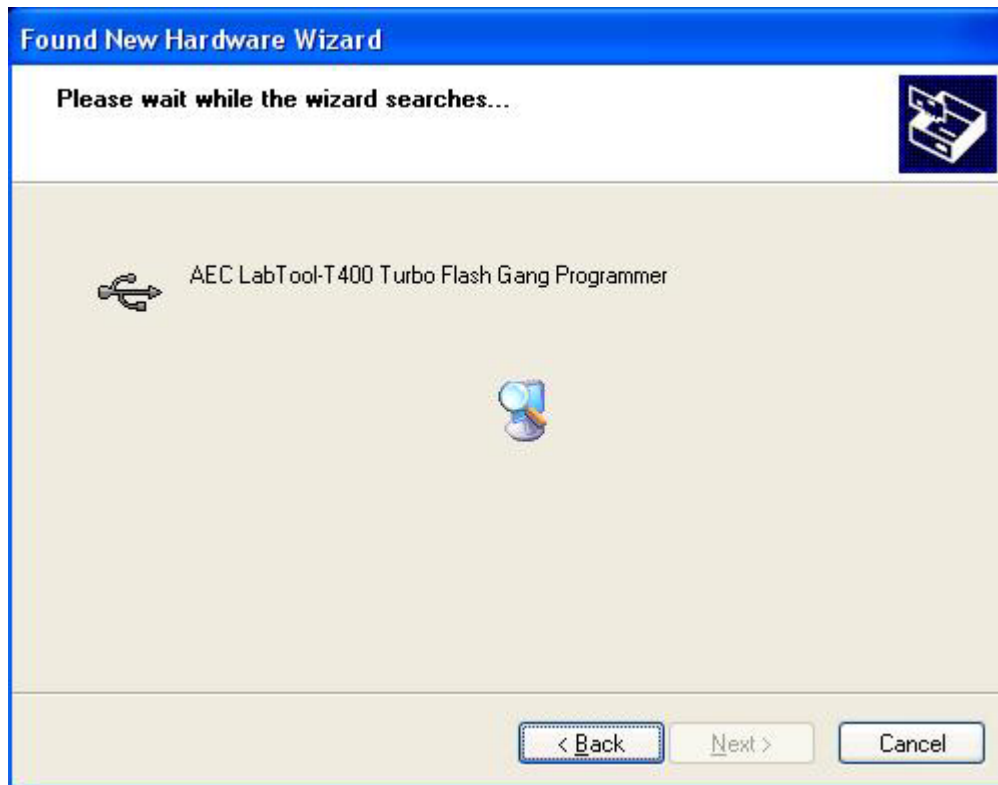
**Step2. Turn the LABTOOL-T400 power on. You will see the messages  
Fig2-1: Select “No, not this time” and then press ”Next”**



**Fig2-2 : Select “Install the software automatically (Recommended)” and then press “Next”**



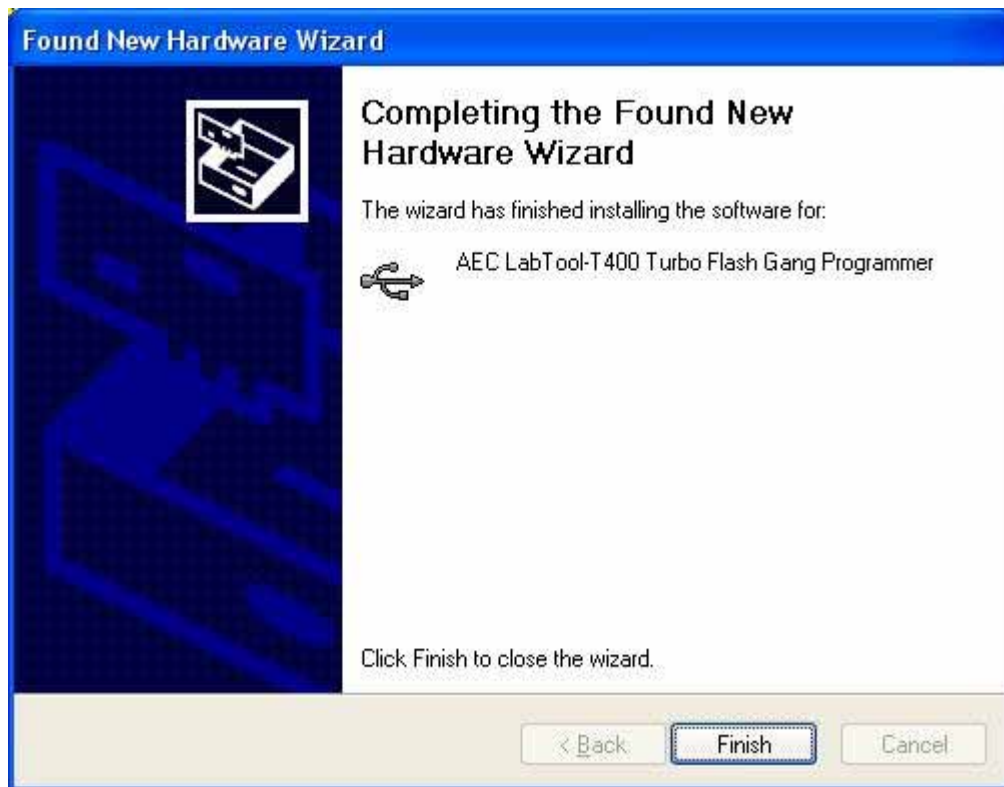
**Fig2-3 : Installing**



**Fig2-4 : Press “Continue Anyway”.** If you select the other button, the O.S. will has a wrong “!USB Device” in your PC.

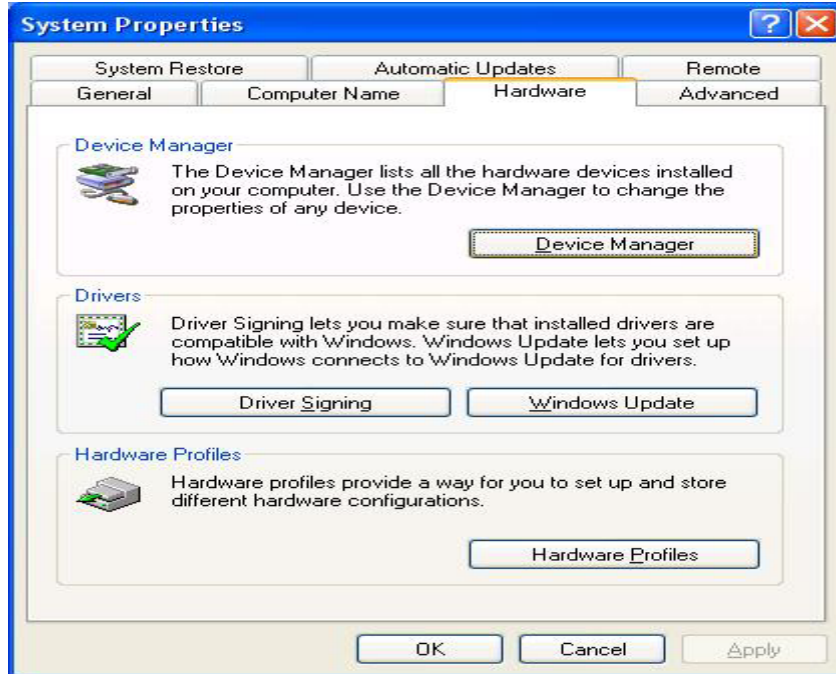


**Fig2-5 : Press “ Finish”**

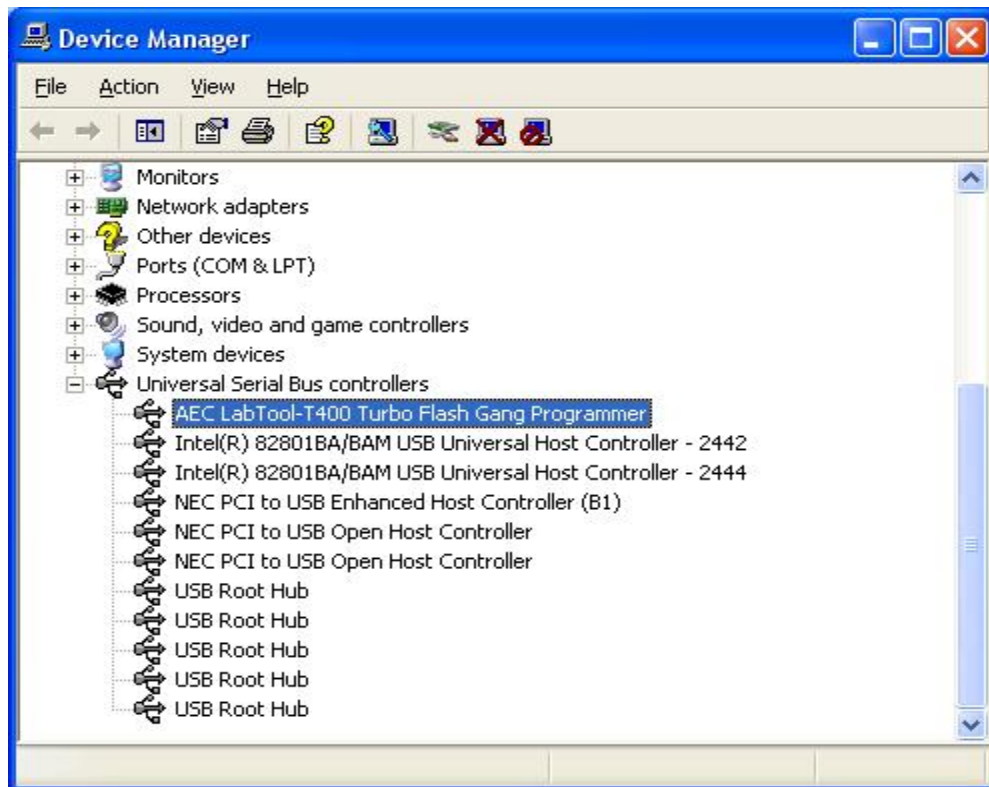


**Step3. Select “Start → Control Console → System → Hardware → Device Manager” and you will see the “AEC LabTool-T400 Turbo Flash Gang Programmer”.**

**Fig3-1 : Press ”Device Manager”**



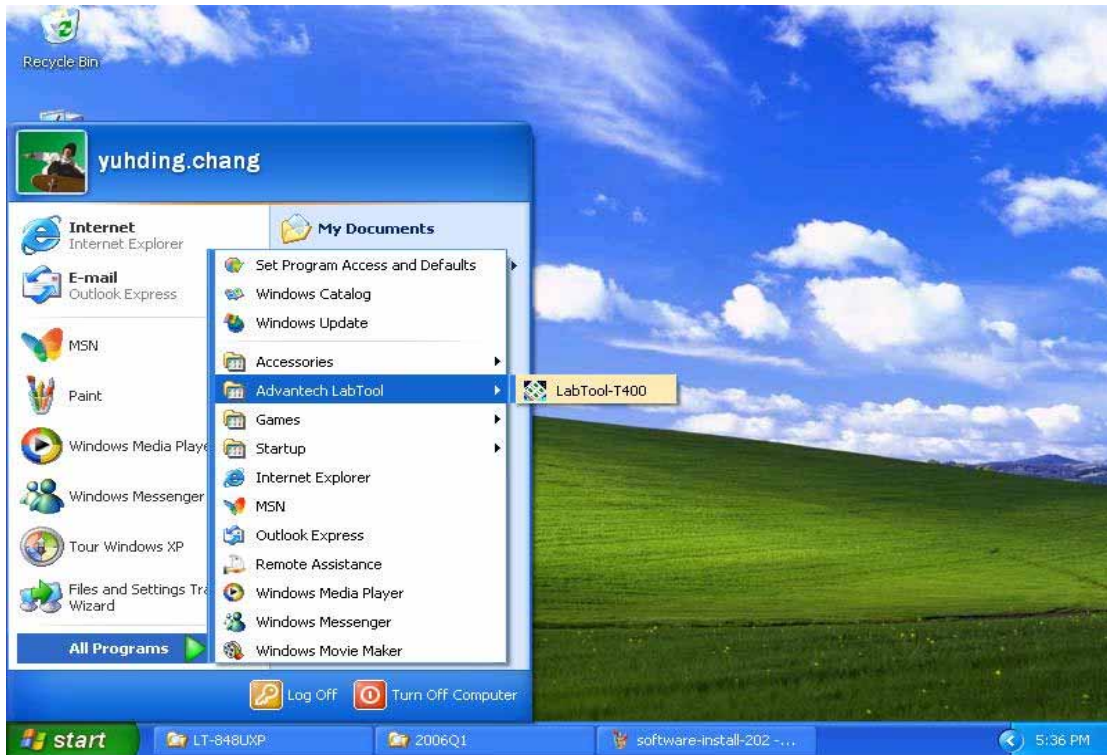
**Fig3-2 : You will see the “AEC LabTool-T400 Turbo Flash Gang Programmer” below your Universal Bus controllers.**





**Step4. Run the LABTOOL-T400 software.**

**Fig4-1: Select “Start” -> “All Programs” -> ” Advantech LabTool” -> “LabTool-T400”**



**Fig4-2 : After run the LabTool-T400 software, you will see your LabTool-T400 serial number with USB interface.**

