

Q&A

1. How to install the LABTOOL-848XP software?

Sol:

Step1. Install the LABTOOL-848XP software. If you do not have the software, and you can download it from our website(www.aec.com.tw). If you have installed the software, skip this step.

Step2. Turn the LABTOOL-848XP power on.

Step3. Select “Start → Control Console → System → Hardware → Device Manager” and you will see the “AEC LabTool-848XP Turbo Gang Programmer”.

Step4. Run the LABTOOL-848XP software.

Note : Recommended O.S. in your PC

- (1) Windows XP + SP1**
- (2) Windows XP + SP2**
- (3) Windows 2000 + SP4**

Step1. Install the LABTOOL-848XP software. If you do not have the software, and you can download it from our website(www.aec.com.tw). If you have installed the software, skip this step.

Fig1-1 : Press “ Yes”



Fig1-2 : Extracting



Fig1-3 : Press “ Next”

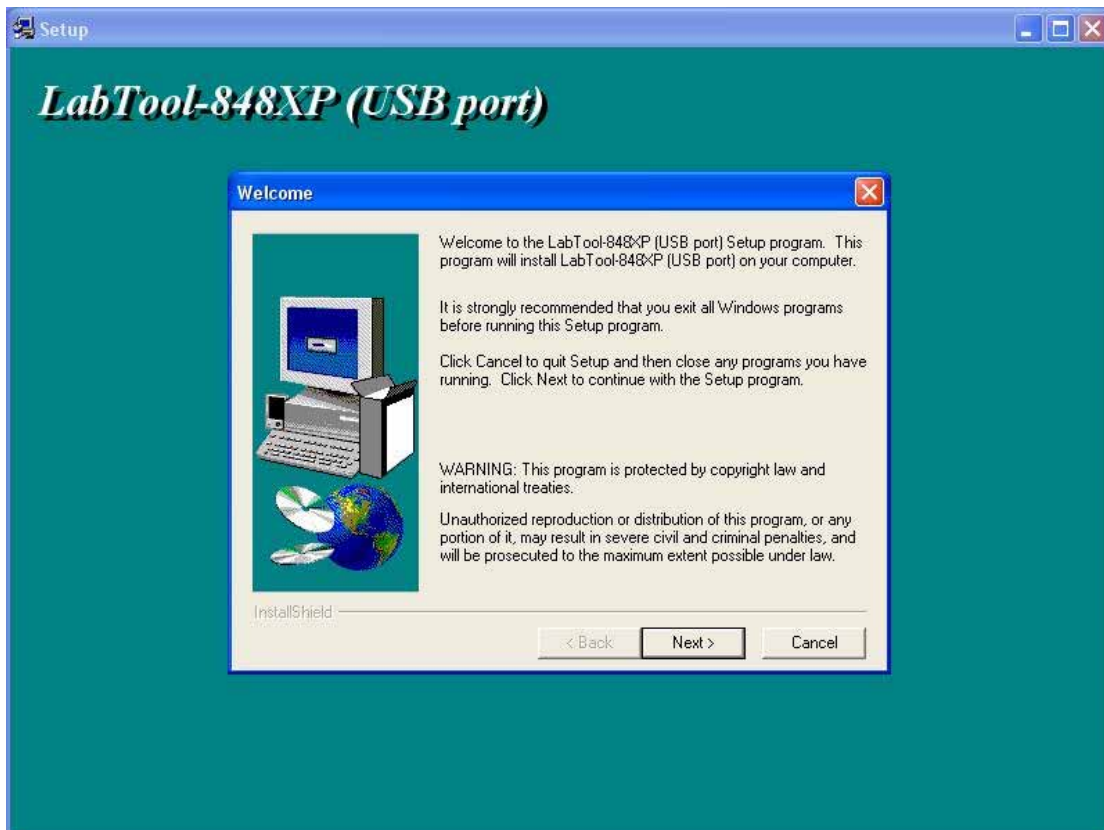


Fig1-4 : Press “ Next”

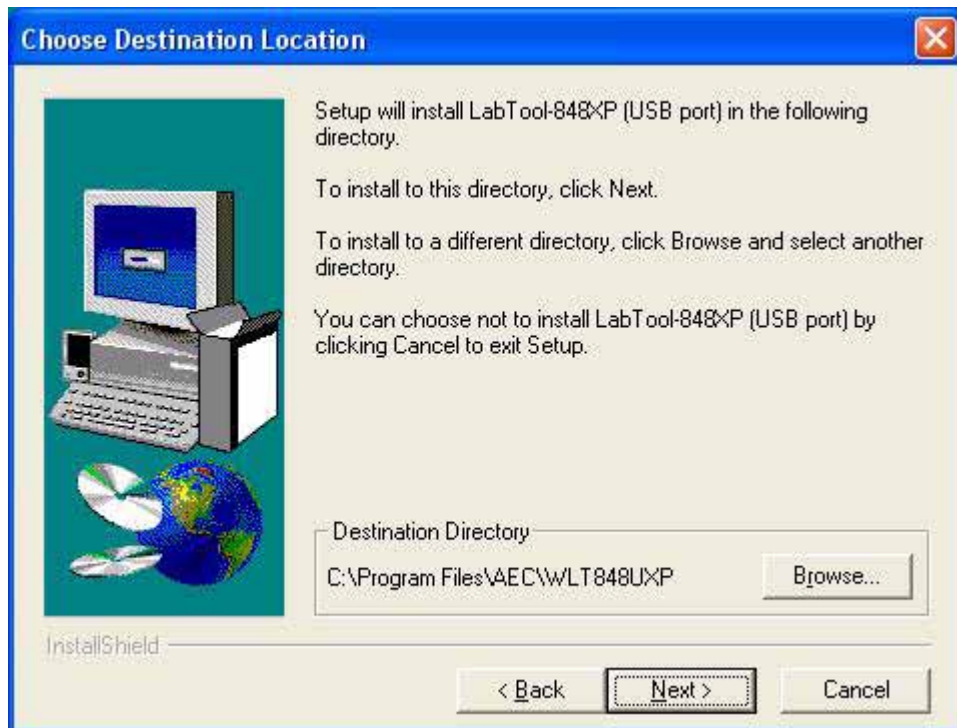


Fig1-5 : Press “ Next”

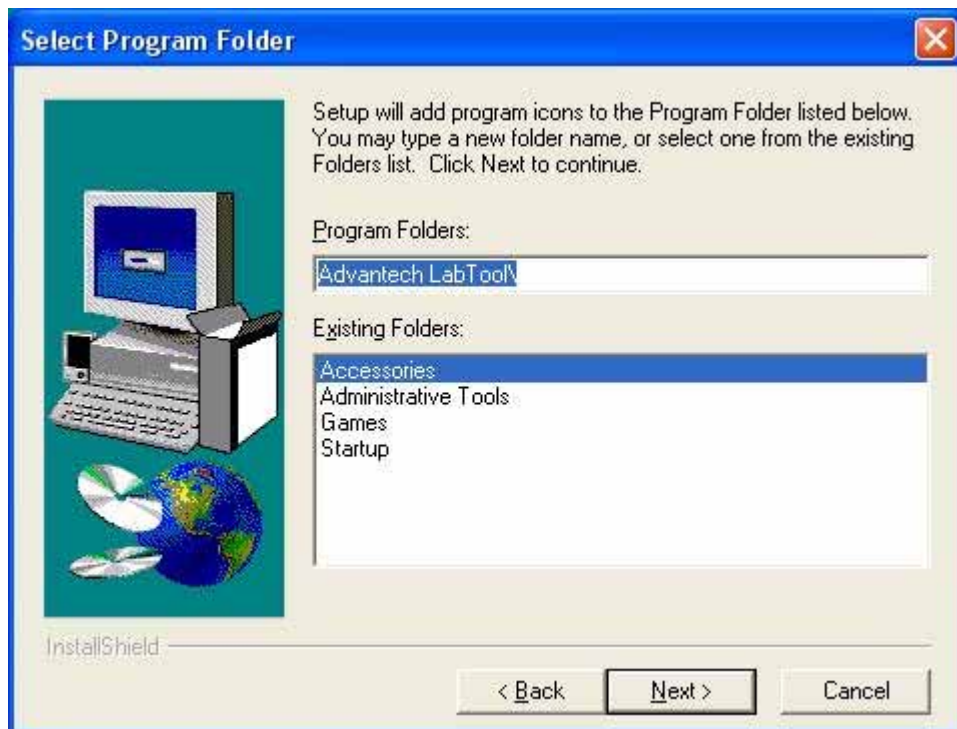


Fig1-6 : Press “ Next”



Fig1-7 : Installing

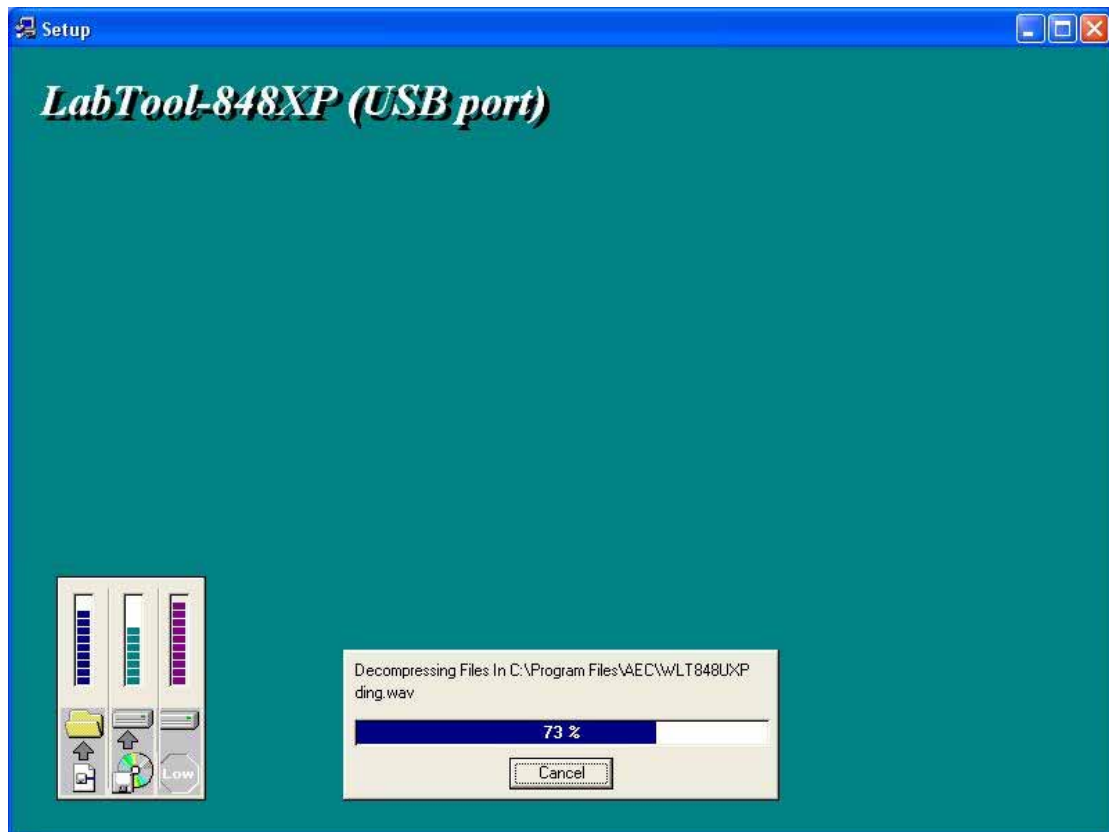


Fig1-8 : Select “No, I will restart my computer later” and then press “Finish”

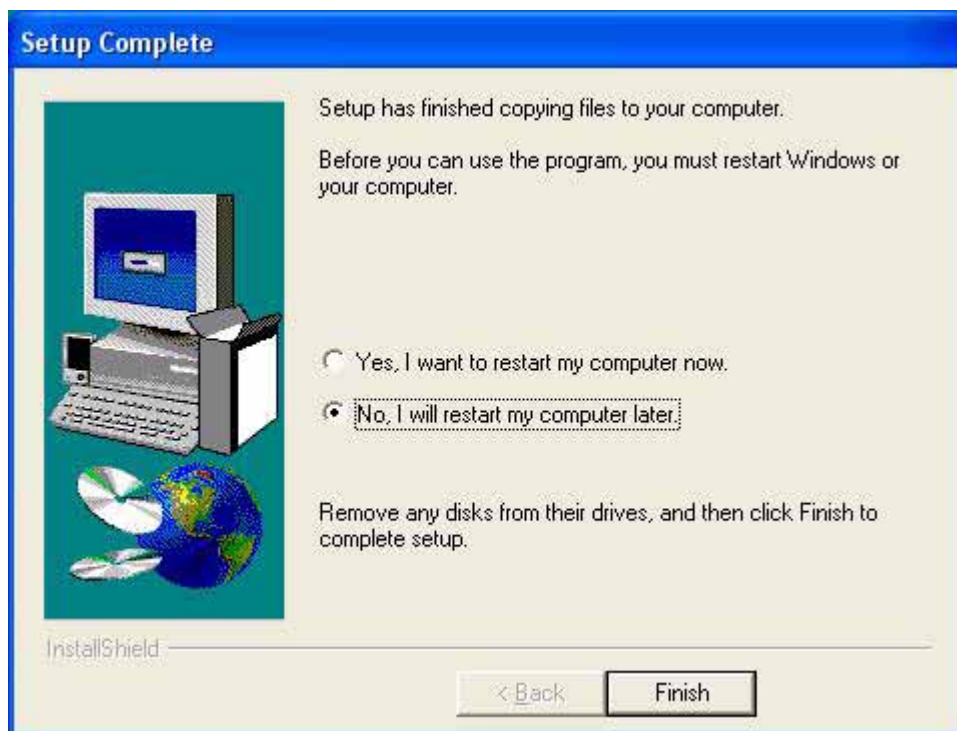


Fig1-9 : Press “ Finish”



**Step2. Turn the LABTOOL-848XP power on. You will see the messages
Fig2-1: Select “No, not this time” and then press ”Next”**



Fig2-2 : Select “Install the software automatically (Recommended)” and then press “Next”

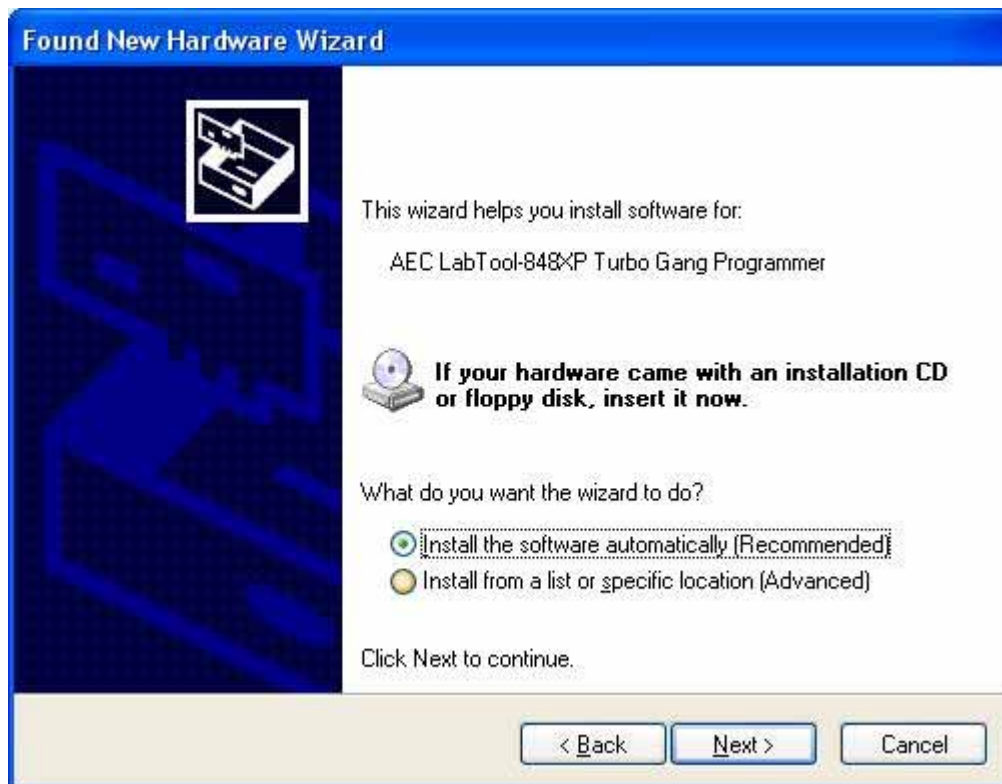


Fig2-3 : Installing

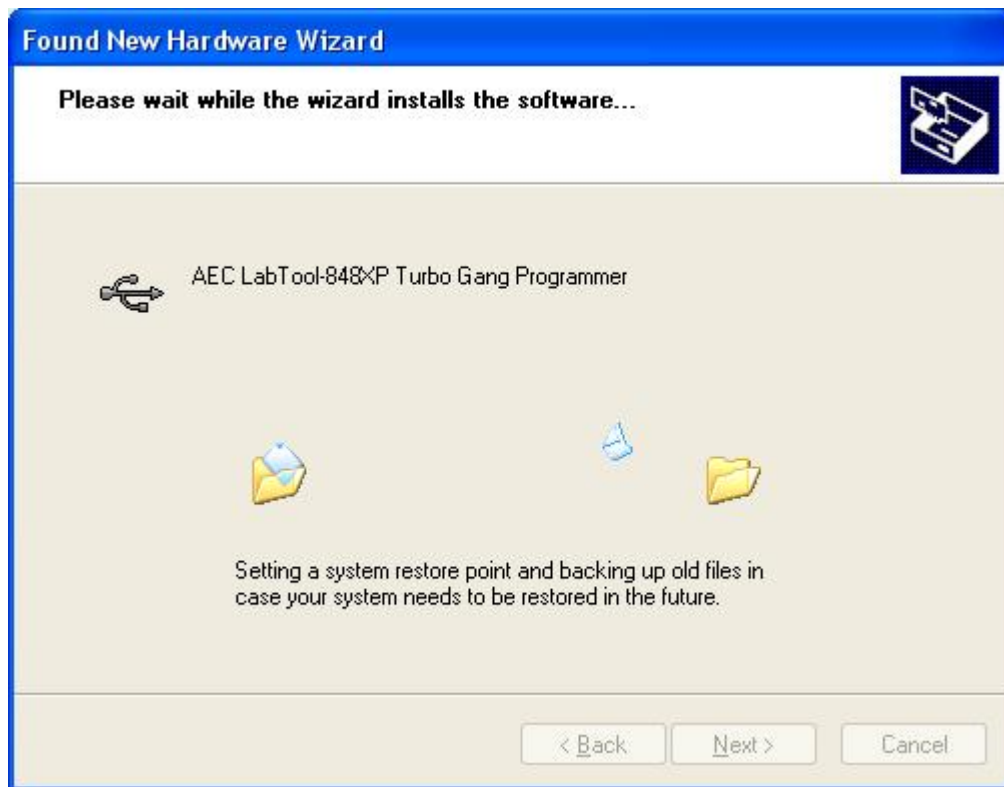


Fig2-4 : Press “Continue Anyway”. If you select the other button, the O.S. will have a wrong “!USB Device” in your PC.



Fig2-5 : Press “ Finish”



Step3. Select “Start → Control Console → System → Hardware → Device Manager” and you will see the “AEC LabTool-848XP Turbo Gang Programmer”.

Fig3-1 : Press ”Device Manager”

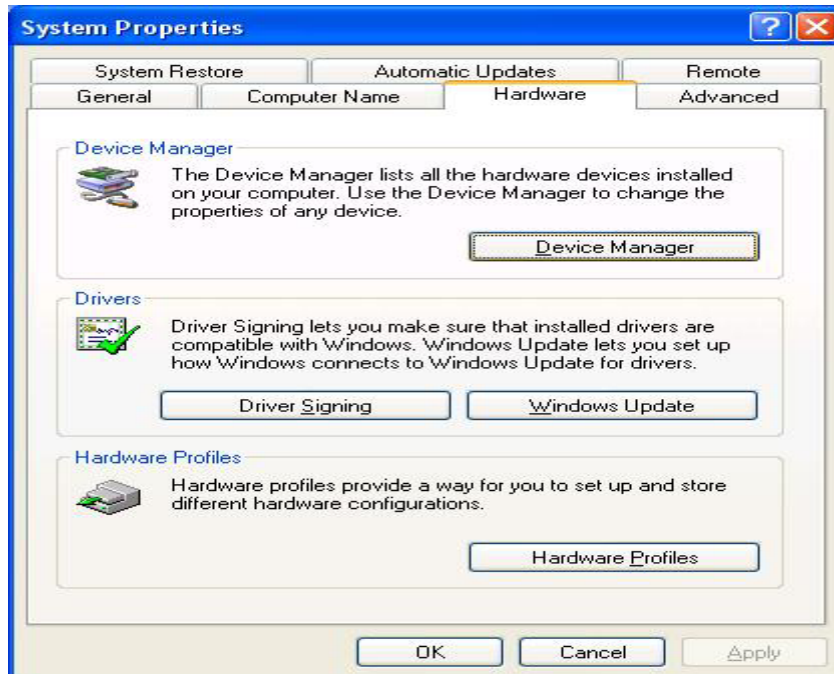
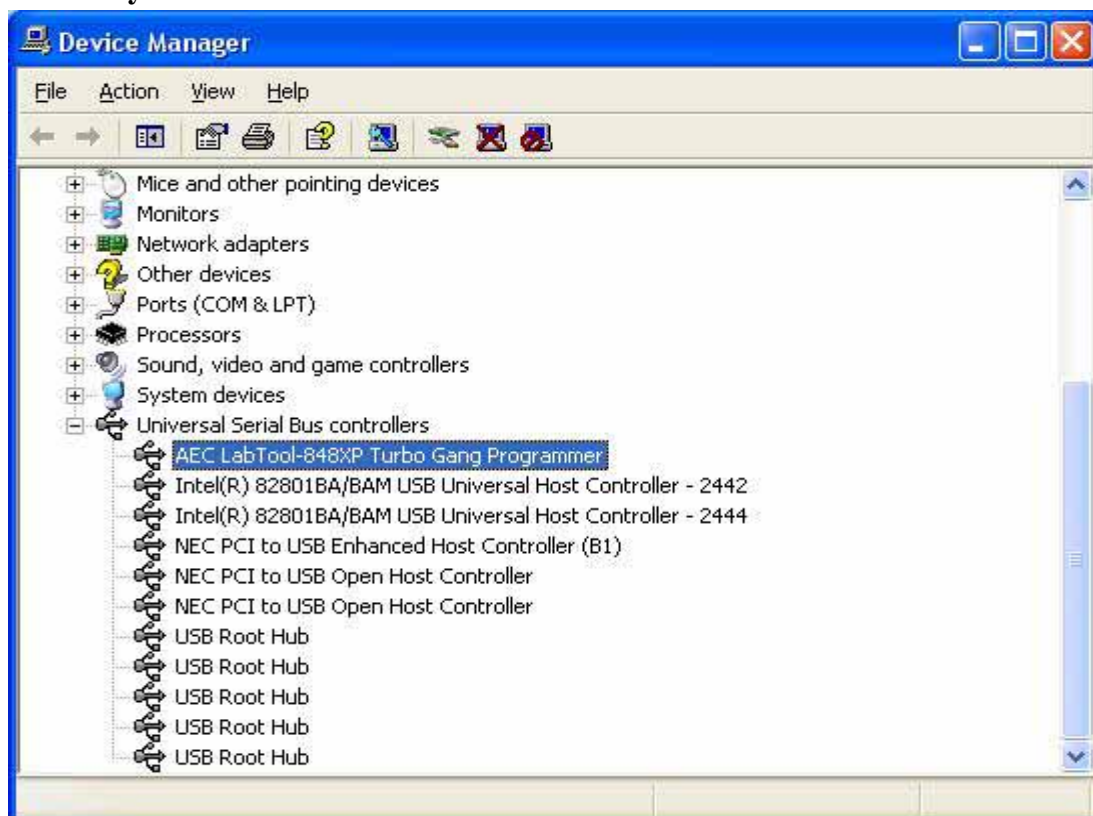


Fig3-2 : You will see the “AEC LabTool-848XP Turbo Gang Programmer” below your Universal Bus controllers.



Step4. Run the LABTOOL-848XP software.

Fig4-1: Select “Start” -> “All Programs” -> ” Advantech LabTool” -> “LabTool-848XP (USB port)”



Fig4-2 : After run the LabTool-848XP software, you will see your LabTool-848XP serial number with USB interface.

